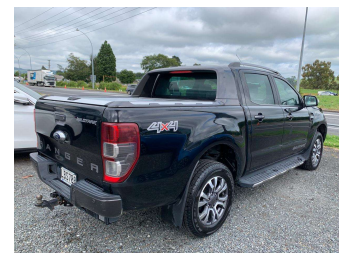



2017 Ford Ranger WILDTRAK PX2 4WD 3.2DT D/Cab



Purchase Price **\$31,950**
Includes GST, Registration & Licensing

Indicative repayments
\$198.60 per week*
Based on a 36 month term & 20% deposit.
Total repayments (156) = **\$37,371.67**



Gain peace of mind with
Mechanical Breakdown
Insurance. **Ask us how.**



Top features

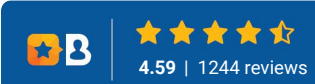
- » 4WD 4x4 4 Wheel Drive...
- » 6 SRS Air Bags
- » ABS Braking
- » Alloy Wheels
- » Blinker Mirrors
- » Bonnett Protector
- » Central Locking
- » Climate Control
- » Cruise Control
- » Electric Drivers Seat
- » Electric Mirrors
- » Electric Windows
- » Full Centre Seat Belt
- » Full Service History
- » Hard Lid
- » Heated Seats
- » Higher seating positio...
- » NZ From New

Body Style	4 door, Ute	Reg No.	LBS708
Odometer	186,407 km	Ext Colour	Black
Engine	3198 cc, Internal Combustion	History	NZ New, 1 owner
Fuel Type	Diesel	Seats	5 seats, Half Leather
Transmission	Automatic, 4WD	CO2 Emissions	-
Wheels	-	Energy Economy	-
VIN	MPBUMFF50HX138421		
Interior	Black		
Safety	-		

Stock ID: 4920



Driven Auto Sales | Phone 07 579 9169 | Email sales@drivenauto.co.nz
751 State Highway 29, Tauriko, Tauranga 3171, New Zealand
www.drivenauto.co.nz



* Driven Auto Sales is not a lender nor a financial adviser. Any amounts displayed should not be seen as an offer of finance or taken as financial advice. The interest rate, fees and loan term used in this calculation may not actually represent those available from lenders. Actual interest rates, fees and loan terms will vary per lender and are typically based on an assessment of your credit risk and responsible lending criteria. Any repayment amounts displayed are indicative only and have been calculated using several other indicative inputs. The interest rate used in this calculation is an arbitrary 12.95%, however exact interest rates vary per lender. The term of the loan used in this calculation is 36 months. Exact terms available vary per lender although options typically include 6, 12, 18, 24, 36, 48 and 60 months. The total amount of repayments has been calculated by multiplying 156 weekly repayments (based on a 36 month term) by the weekly repayment amount of \$198.60 which equals \$37,371.67. This calculator does not consider any of your own personal circumstances and we strongly suggest you seek budgeting advice prior to committing to any loan contract. Responsible lending criteria and lender terms and conditions will likely apply to any finalised loan contract. Proof of security and/or vehicle insurance may also be required before proceeding.