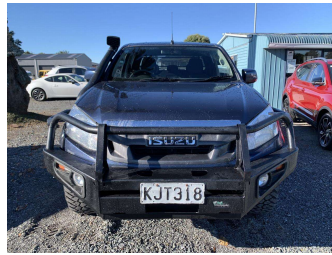



# 2017 Isuzu D-Max LX 3.0DT D/Cab 4WD 5MT F/Deck



**Purchase Price** **\$27,990**  
Includes GST, Registration & Licensing

Indicative repayments  
**\$173.99 per week\***  
Based on a 36 month term & 20% deposit.  
Total repayments (156) = **\$32,739.69**



Gain peace of mind with  
Mechanical Breakdown  
Insurance. **Ask us how.**



**Top features**

- » 4WD 4x4 4 Wheel Drive...
- » 6 SRS Air Bags
- » ABS Braking
- » Bullbar
- » Climate Control
- » Electric Mirrors
- » Electric Windows
- » Full Centre Seat Belt
- » NZ From New
- » Remote Central Locking
- » Running Boards
- » Snorkel
- » Steering Wheel Stereo...
- » Tow Bar
- » Traction Control
- » Vehicle Stability Cont...

Body Style  
**4 door, Ute**

Odometer  
**86,700 km**

Engine  
**2999 cc, Internal Combustion**

Fuel Type  
**Diesel**

Transmission  
**5-Speed Manual, 4WD**

Wheels  
-

VIN  
**MPATFS85JGT007470**

Interior  
**Black**

Safety  
-

Reg No.  
**KJT318**

Ext Colour  
**Blue**

History  
**NZ New, 1 owner**

Seats  
**5 seats, Cloth**

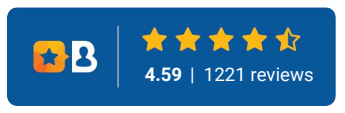
CO2 Emissions  
-

Energy Economy  
-

**Stock ID: 4659**



Driven Auto Sales | Phone 07 579 9169 | Email sales@drivenauto.co.nz  
751 State Highway 29, Tauriko, Tauranga 3171, New Zealand  
www.drivenauto.co.nz



\* Driven Auto Sales is not a lender nor a financial adviser. Any amounts displayed should not be seen as an offer of finance or taken as financial advice. The interest rate, fees and loan term used in this calculation may not actually represent those available from lenders. Actual interest rates, fees and loan terms will vary per lender and are typically based on an assessment of your credit risk and responsible lending criteria. Any repayment amounts displayed are indicative only and have been calculated using several other indicative inputs. The interest rate used in this calculation is an arbitrary 12.95%, however exact interest rates vary per lender. The term of the loan used in this calculation is 36 month. Exact terms available vary per lender although options typically include 6, 12, 18, 24, 36, 48 and 60 months. The total amount of repayments has been calculated by multiplying 156 weekly repayments (based on a 36 month term) by the weekly repayment amount of \$173.99 which equals \$32,739.69. This calculator does not consider any of your own personal circumstances and we strongly suggest you seek budgeting advice prior to committing to any loan contract. Responsible lending criteria and lender terms and conditions will likely apply to any finalised loan contract. Proof of security and/or vehicle insurance may also be required before proceeding.